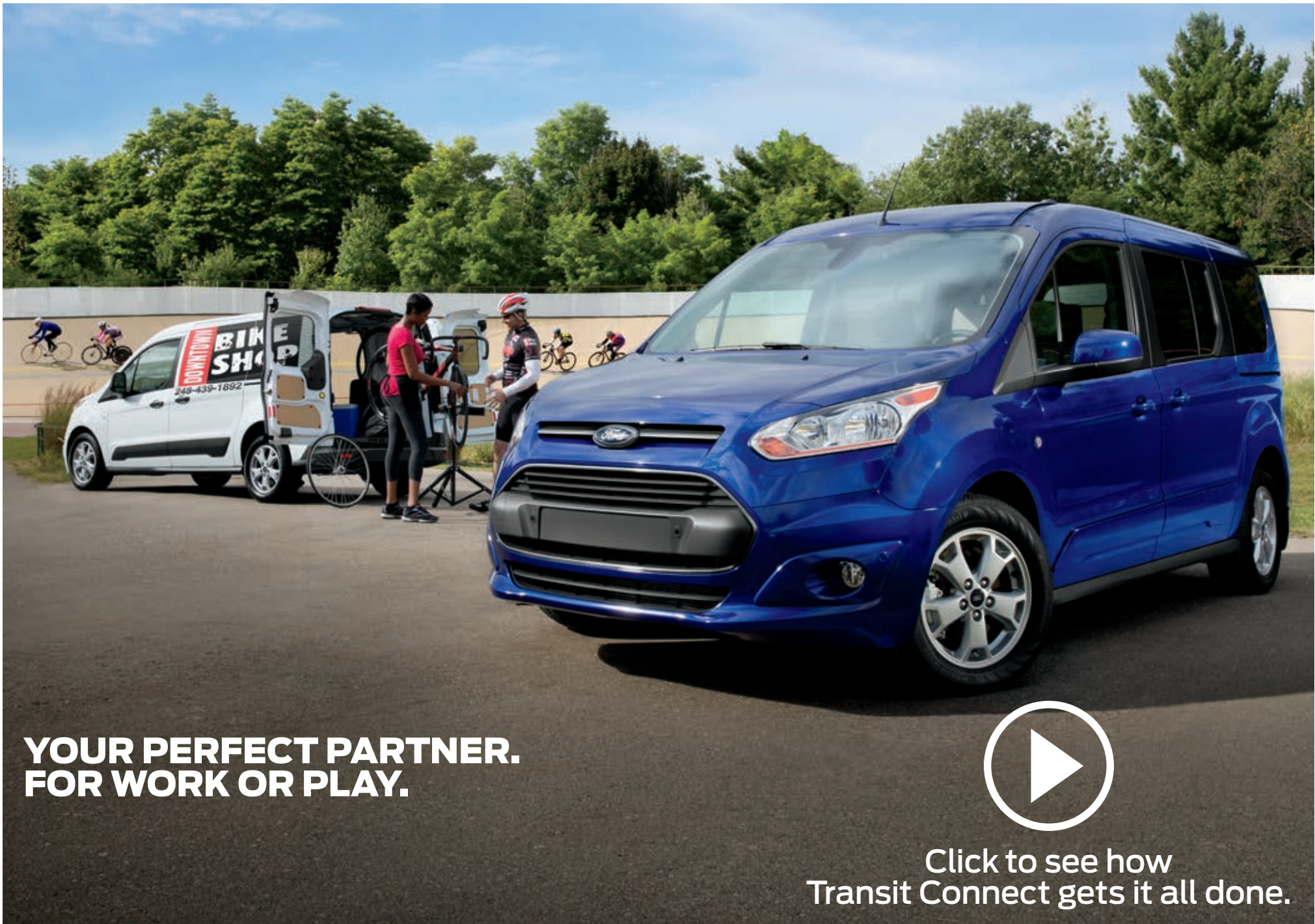




2015
TRANSIT CONNECT





**YOUR PERFECT PARTNER.
FOR WORK OR PLAY.**



Click to see how
Transit Connect gets it all done.

XL Long Wheelbase Van. Frozen White. Titanium Long Wheelbase Wagon. Deep Impact Blue. Available equipment.

2015 **TRANSIT CONNECT**
ford.com





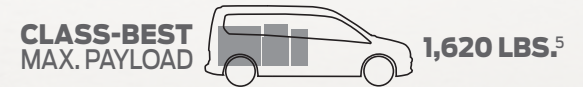
PROVEN AT WORK. NOW IT'S PERSONAL.

Available in Van and Wagon configurations, you've got the perfect partner for work or play in the 2015 Ford Transit Connect.

The ideal tool to bring your business to life, Transit Connect Van features best-in-class¹ cargo room (almost 6 cu. ft. more than its nearest competitor) and a flat load floor behind the front seats. With its durable vinyl floor covering, deliveries or on-site business calls are a snap.

With seating for up to 7 and multiple storage bins, Transit Connect Wagon is the ideal space for busy families on the go.

A class-best EPA-estimated² highway fuel economy rating of 30 mpg is yours when you equip Transit Connect with the 1.6L EcoBoost[®] I-4 engine.³ Whether building your business or making memories, you'll go further in a 2015 Ford Transit Connect.



XLT Long Wheelbase Van. Frozen White. XLT Long Wheelbase Wagon. Tectonic Silver. Available equipment.

¹Class is Small Vans. ²EPA-estimated rating of 22 city/30 hwy/25 combined mpg, 1.6L EcoBoost. Actual mileage will vary. ³Available feature. ⁴Ratings based on Overall and Frontal Crash tests. Government's 5-Star Safety Ratings are part of the U.S. Department of Transportation's New Car Assessment Program (www.safercar.gov). ⁵When properly equipped.

2015 **TRANSIT CONNECT**
ford.com



YOUR ACCESS TO ADVENTURE.

Open your door to adventure with Ford Transit Connect Wagon. Enjoy easy entry and exit thanks to dual sliding side doors, as well as your choice of rear liftgate¹ (shown at right) or 180° swing-out rear cargo doors.¹

Ready to adapt at a moment's notice, this functional vehicle is prepared for anything. If your day starts with passengers, a low step-in height makes entry and exit easy for everyone. Need to go to the market later? There's plenty to appreciate along the way.

Enjoy a panoramic fixed-glass Vista Roof^{®1} with power sunshade, plus power 2nd-row windows with one-touch-up/-down.¹ In short-wheelbase models, 2nd-row seats fold forward or can be removed. In long-wheelbase models, 2nd- and 3rd-row seats fold down to create a flat load floor.

With more available configurations on the long-wheelbase Wagon than any other vehicle in its class, your options are wide open. Carry passengers. Personal gear. Or carry it all together. No worries here.



XL T Long Wheelbase Wagon. Tectonic Silver. Available equipment.

¹Available feature.

2015 **TRANSIT CONNECT**
ford.com





OPENS THE LINES OF COMMUNICATION.

Keeping your “favorites” up to date on your location is easy in Ford Transit Connect. Just speak your mind. Then relax as voice-activated Ford SYNC® with 911 Assist® delivers hands-free calls, Bluetooth®-streaming music and more with simple voice commands. Once paired, it can download contacts and play music from your smartphone. It can also access your MP3 player, USB or iPod.® Just push a button on the steering wheel and say things like “Call: Sam at home” or “Play playlist: Indie Rock.” SYNC AppLink™^{1,2} even lets you control Pandora®, iHeartAuto™, the SiriusXM® App and other select apps by voice, too.

| SYNC

Add a 6.5" color LCD touch screen, media hub and more when you opt for SYNC with MyFord Touch.®¹

SiriusXM Satellite Radio³ lets you enjoy commercial-free music, plus sports, news, entertainment, and every premium channel with your 6-month All Access trial subscription.⁴ The voice-activated Navigation System³ also includes a 5-year subscription to SiriusXM Traffic and Travel Link® services.³ These features provide detailed traffic information on accidents, construction, and road closures, plus local and national weather forecasts, fuel prices and more.

(SiriusXM®)



2015 **TRANSIT CONNECT**
ford.com

¹Available feature. Driving while distracted can result in loss of vehicle control. Only use SYNC/MyFord Touch/other devices, even with voice commands, when it is safe to do so. Some features may be locked out while the vehicle is in gear. Not all features are compatible with all phones. ²SYNC AppLink is available on select models and compatible with select smartphone platforms. SYNC AppLink is not compatible with MyFord Touch. Commands may vary by phone and AppLink software. ³Available feature. ⁴Trial subscription also includes access to SiriusXM Internet Radio on your computer, smartphone or tablet. Satellite and Internet Radio lineups vary slightly.



SPACE FOR 7. WITH AMENITIES FOR ALL.

See seats
fold and
add cargo



Transit Connect Wagon surrounds you in comfort and safety.

Enjoy stylish leather-trimmed seats! Keep your coffee or H₂O close at hand thanks to cupholders in each row, including 2 in the 2nd-row armrest.¹ Watch those in rows 2 and 3¹ with a convenient observation mirror.¹

Charge your mobile phone with the center console's 12-volt powerpoint. For passengers, there are also 2 powerpoints in back.

6 standard airbags² include a Safety Canopy[®] System with rollover sensor and side-curtain airbags for all outboard passengers. Safety, after all, is always in style.

Titanium 7-passenger Wagon. Medium Stone leather trim. Available equipment.

¹Available feature. ²Always wear your safety belt and secure children in the rear seat.

2015 **TRANSIT CONNECT**
ford.com





FUELS YOUR ENTHUSIASM.

Transit Connect is the perfect match for high-energy lifestyles.

Go inside
EcoBoost



Class-best performance comes from the turbocharged, direct-injection 1.6L EcoBoost® I-4 engine¹ that delivers 178 hp,² 184 lb.-ft. of torque and a maximum towing capacity of 2,000 lbs.³ The 1.6L also has a class-best EPA-estimated rating of 30 hwy mpg.⁴ To maximize aerodynamic efficiency and maintain ideal EcoBoost engine temperatures, Transit Connect automatically opens and closes its Active Grille Shutters.

Shift for yourself, or leave it to Transit Connect, with the 6-speed SelectShift® automatic that's mated to both engines, including the standard 2.5L I-4. Torque Vectoring Control, Curve Control and trailer sway control¹ add additional layers of driving and trailer-towing confidence.

Throw additional light alongside the vehicle with cornering fog lamps,¹ which are great for pre-dawn adventures. To quickly clear fog, snow, sleet or ice, the Quickclear™ electric windshield defroster¹ works alongside heated windshield washer jets¹



2015 **TRANSIT CONNECT**
ford.com

XL T Short Wheelbase Wagon. Magnetic. Available equipment.

¹Available feature. ²Using 93-octane fuel. ³When properly equipped. ⁴EPA-estimated rating of 22 city/30 hwy/25 combined mpg, 1.6L EcoBoost. Actual mileage will vary.



DELIVERS THE GOODS. 24/7.

With the front-passenger seat folded down, Transit Connect Van swallows up to 149.0 cu. ft. of cargo.¹

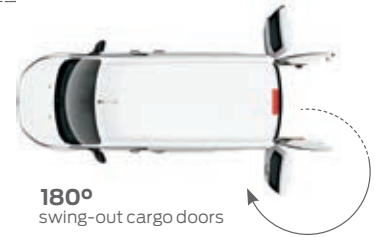
Access is easy through dual sliding side doors, or through your choice of rear doors: 180° swing-out cargo doors (great when you have a ladder rack up top) with or without fixed glass² or a single liftgate² with fixed glass that's easy to raise and lower (even providing some rain protection when loading). With the room you need to stay on schedule, Transit Connect Van has a huge appetite for work.

Showcase your company name and details on Transit Connect Van's large exterior panels, letting others quickly know your business.

Thanks to a low load floor height (under 2'), moving things in and out is no sweat. Add in a 36.1' curb-to-curb turning diameter³ for negotiating tight places, along with a rear view camera² and Forward and Reverse Sensing Systems² for help in parking, and you've got a vehicle that helps you get more done – each and every day.



48.3" sliding door opening height



180° swing-out cargo doors

XL^T Long Wheelbase Van. Dual cargo doors. Frozen White. XL^T Long Wheelbase Van with liftgate. Race Red. Available and aftermarket upfit equipment.

¹Long-wheelbase model. Cargo and load capacity limited by weight and weight distribution. ²Available feature. ³Short-wheelbase Van. Long-wheelbase Van is 40.0'.

2015 **TRANSIT CONNECT**
ford.com





MEASURES UP TO BIG EXPECTATIONS.

Starting with a best-in-class maximum payload rating of 1,620 lbs.¹ Behind its comfortable front seats, trimmed in durable vinyl or rugged cloth,² Transit Connect Van holds the long, tall and short of your business. In the long-wheelbase Van, fold the passenger seat down for up to 149.0 cu. ft. of cargo room. Items up to 4' wide, 4' tall, or over 9' long will fit inside.

Load it with cargo



The flat load floor, durable vinyl floor covering, cargo tie-down hooks and near-vertical walls help you make the best use of all that room to transport larger loads, and it's washable for quick cleanup after the work is done. With low side and rear load-floor heights, sliding side door access from either side, plus 180° swing-out rear cargo doors,² Transit Connect Van performs like your warehouse on wheels.



2015 **TRANSIT CONNECT**
ford.com

¹When properly equipped. Cargo and load capacities limited by weight and weight distribution. ²Available feature. ³Long-wheelbase Van with passenger seat folded down.



ENHANCES PRODUCTIVITY. ALWAYS GOOD BUSINESS.

Which Ford Transit Connect is right for you? Van. Wagon. Short or long wheelbase. XL, XLT or Titanium trim. By offering a full lineup of Built Ford Tough® vehicles, Transit Connect sets itself apart with unmatched versatility. A hard worker right from the factory, Transit Connect Van can do even more with upfits for your line of work – like the cargo management packages¹ shown at right. Durable bulkhead partitions¹ and flexible interior storage systems¹ can help create a Transit Connect Van that's tailored to you.



Katerack®
by Dayton Cargo & Van Interiors

Dejana offers rear and side Katerack® shelving systems with heavy-duty pull-out drawers. Standard 6" and 10" shelves; plus trade-ready packages for a wide variety of vocations, including contractors and service technicians.

Leggett & Platt
Commercial Vehicle Products

Leggett & Platt CVP offers Masterack® cargo management systems, steel Racks & Bins, lightweight composite SmartSpace™ shelving packages, drawer storage cabinets, ladder racks, and window screen accessories.



ADRIAN STEEL
Cargo Management Solutions for Commercial Vehicles

Adrian Steel offers wire and steel bulkheads; cargo management packages with adjustable shelving, versatile ladder racks, floor drawers for lockable storage and window screens for security.

Sortimo
By
KNAPHEIDE

Sortimo By Knapheide offers ABS Protexx Partitions® (with and without a window); Exxpand® base shelving packages for either the street side, curbside, or both; and a variety of Boxxes® and Axxessories® to upgrade the base packages to meet the vocational needs of today's contractors.



¹Available feature.

TRANSIT CONNECT SPECIFICATIONS

STANDARD FEATURES



Van (Short Wheelbase)



Van (Long Wheelbase)



Wagon (Short Wheelbase)



Wagon (Long Wheelbase)

Mechanical

- 2.5L DOHC I-4 engine
- 6-speed SelectShift® automatic transmission
- Alternator – 150-amp
- Battery – 590 Cold Cranking Amps, 60-amp-hr
- Battery saver
- Electric power-assisted steering
- Front-wheel drive (FWD)
- Fuel tank – 15.8-gallon
- Full-size spare tire
- Hill start assist
- Suspension – Front: independent MacPherson-strut; rear: twist-beam
- Torque Vectoring Control

Seating

- 2-passenger seating (Van)
- 5-passenger seating (SWB Wagon)
- 7-passenger seating (LWB Wagon)
- Front bucket seats
- 2nd-row 3-passenger 60/40 split folding seat (Wagon)
- 3rd-row 2-passenger fold-flat seats (LWB Wagon only)

Interior

- 12-volt powerpoint in center console (Van)
- 12-volt powerpoints – 2 in center console (front and rear) and 1 in rear cargo area (Wagon)
- Auxiliary audio input jack
- Cargo area tie-down hooks (floor-mounted)
- Driver's seat back map pocket (Wagon)
- Dual front map lights and rear overhead courtesy light (Wagon)
- Front doors – Inner door bins with bottle recesses and illuminated window switches
- Instrumentation – Speedometer (mph/kph) with tachometer and trip computer
- Overhead storage shelf with grab handles (Van)

- Power door locks with central locking
- Premium front center closable console with 2 cupholders (Wagon)
- Rear cargo area light (Van)
- Rear cupholders – 2 for 2nd row and 2 for 3rd row (Wagon; 3rd-row LWB only)
- Remote Keyless Entry System with 2 key fobs
- Tilt/telescoping steering column
- Windows – Power front with one-touch-down on driver's side (Van)

Exterior

- Bodyside moldings – Gray (Van)
- Cargo doors – Rear, 180° swing-out (Van; no 2nd-row glass or rear glass)
- Door handles – Black (Van)
- Dual sliding side doors (no glass on Van)
- Easy Fuel® capless fuel filler
- Grille and upper grille bar – Gray (Van)
- Halogen headlamps
- Headlamp bezels – Black (Van)
- Rear liftgate with fixed glass (Wagon)
- Wipers – Variable-intermittent front (Van and Wagon) and rear with wash feature (Wagon)

Safety & Security

- AdvanceTrac® with RSC® (Roll Stability Control™) and Curve Control
- Airbags¹ – Driver and front-passenger front
- Airbags¹ – Front-seat side
- Airbags¹ – Side-curtain for 1st row (Van)
- Airbags¹ – Side-curtain for all rows (Wagon; SWB Wagon has 1st/2nd rows; LWB Wagon has 1st/2nd/3rd rows)
- Brakes – Power 4-wheel disc with Anti-Lock Brake System (ABS)
- SecuriLock® Passive Anti-Theft System
- Tire Pressure Monitoring System (excludes spare)

DIMENSIONS

	Van SWB 2-seater	Van LWB 2-seater	Wagon SWB 5-seater	Wagon LWB 7-seater
Exterior				
Wheelbase	104.8"	120.6"	104.8"	120.6"
Length	173.9"	189.7"	173.9"	189.7"
Height	72.5"	72.8"	72.6"	72.0"
Width – Excluding mirrors	72.2"	72.2"	72.2"	72.2"
Width – Including mirrors	84.1"	84.1"	84.1"	84.1"
Width – Mirrors folded	77.4"	77.4"	77.4"	77.4"
Track – Front	61.4"	61.4"	61.4"	61.4"
Track – Rear	61.7"	61.7"	61.7"	61.7"
Overhang – Front	34.6"	34.6"	34.6"	34.6"
Overhang – Rear	34.6"	34.6"	34.6"	34.6"

Interior (1st/2nd/3rd row)

Head room	46.9"/–/–	46.9"/–/–	46.9"/45.1"/–	46.9"/45.1"/41.3"
Shoulder room	57.7"/–/–	57.7"/–/–	57.7"/58.5"/–	57.7"/58.5"/56.3"
Hip room	54.2"/–/–	54.2"/–/–	54.2"/58.3"/–	54.2"/58.2"/47.0"
Leg room	41.5"/–/–	41.5"/–/–	41.5"/37.6"/–	41.5"/37.6"/35.0"

Cargo Area

Length – Front at floor	71.5"	87.3"	70.9"	85.8"
Length – Front at belt	61.3"	77.1"	60.9"	76.7"
Length with front-passenger seat folded (Van only)	101.1"	116.9"	–	–
Load height (curb)	23.4"	23.7"	23.5"	22.7"
Side cargo door opening height	48.3"	48.3"	44.9"	44.9"
Side cargo door opening width	24.1"	33.0"	24.1"	33.0"
Rear cargo door opening height	44.0"	44.0"	45.1"	45.1"
Rear cargo door opening width	49.3"	49.3"	47.0"	47.0"
Width between wheelhouses	48.3"	48.3"	46.9"	46.9"
Height max.	49.7"	49.7"	49.0"	42.2"

Capacities

Passenger volume (cu. ft.)	63.2	63.2	120.7	166.0
Max. towing (lbs.)	2,000	2,000	2,000	2,000
Max. GVWR (lbs.)	5,020	5,270	4,820	5,280
Max. payload (lbs.)	1,470	1,620	1,130	1,270

Cargo Volume (cu. ft.)

Behind 1st row (with 2nd-row seat folded)	–	–	77.1	104.2
Behind 2nd row	–	–	46.9	58.9
Behind 3rd row (with 3rd-row in design position)	–	–	–	15.7
Behind 3rd row (with 3rd-row seat moved to most forward position)	–	–	–	19.8
Behind 1st row (Van only; no 2nd- or 3rd-row seats)	103.9	128.6	–	–
Maximum with front-passenger seat folded (Van only; without bulkhead)	124.3	149.0	–	–

Dimensions may vary by trim level. Cargo and load capacity limited by weight and weight distribution. ¹Always wear your safety belt, secure children in the rear seat and follow airbag warning label instructions. ²Using 93-octane fuel.

CONFIGURATIONS



Van (Short Wheelbase) – Available as XL, XLT



Van (Long Wheelbase) – Available as XL, XLT



Wagon (Short Wheelbase) – Available as XLT



Wagon (Long Wheelbase) – Available as XL, XLT, Titanium

ENGINES/ EPA-ESTIMATED RATINGS

2.5L DOHC I-4

- 169 hp @ 6,000 rpm
- 171 lb.-ft. of torque @ 4,500 rpm
- 6-speed SelectShift automatic transmission
- 20 city/28 hwy/23 combined mpg (Wagon)
- 21 city/29 hwy/24 combined mpg (Van)

1.6L EcoBoost® I-4

- 178 hp @ 5,700 rpm²
- 184 lb.-ft. of torque @ 2,500 rpm
- 6-speed SelectShift automatic transmission
- 22 city/30 hwy/25 combined mpg (SWB Wagon)
- 22 city/30 hwy/25 combined mpg (Van)

2015 TRANSIT CONNECT
ford.com



XL



XL Wagon. Charcoal Black cloth.¹ Available equipment.

6-speed SelectShift[®] automatic transmission.

6-way manual driver's seat with recline.¹

Driver's seat manual lumbar.¹



16" Steel with Styled Wheel Cover Standard

XL VAN

Includes all standard features, plus:

Configurations

Short Wheelbase – 2-passenger

Long Wheelbase – 2-passenger

Mechanical

16" steel wheels with styled wheel covers and 215/55R16 all-season tires

Seating

4-way manual driver's seat with manual recline

4-way manual front-passenger seat with folding back and manual recline

Pewter vinyl seating surfaces

Interior

AM/FM stereo with 2 speakers

Air conditioning with manual front controls

Flooring – Vinyl front; molded-in vinyl liner in rear cargo area

Front center console with 2 cupholders

Exterior

Bumpers – Gray front and rear

Fog lamp bezels – Black

Mirrors – Black sideview, manually adjustable glass, manual folding with integrated blind spot mirrors

Rear bumper end caps – Gray

Available Options

Mechanical

1.6L EcoBoost[®] engine with Active Grille Shutters

Seating

6-way manual driver's seat with manual lumbar and 4-way manual passenger seat with fold-flat back and manual recline (also available without fold-flat passenger seat)

Interior

Rear cargo area light – LED

Exterior

Cargo doors – Rear, 180° swing-out with fixed glass

Mirrors – Large sideview (recommended for towing; requires power-adjustable, heated mirrors)

Rear liftgate with fixed glass

Windows – Fixed 2nd-row driver and passenger side (requires fixed rear glass)

Windows – Fixed 2nd-row passenger side

XL WAGON

Includes select XL Van features, plus:

Configurations

Long Wheelbase – 7-passenger

Seating

6-way manual driver's seat with manual lumbar/recline

Interior

AM/FM stereo with 4 speakers (2 front, 2 rear)

Air conditioning with manual front and rear controls – Includes rear-compartment air conditioning and heater with manual controls

Day/night rearview mirror

Flooring – Vinyl in front, 2nd and 3rd rows, and rear cargo area

Overhead storage shelf with grab handles

Windows – Power front with one-touch-down on driver's side

Exterior

Bodyside moldings – Gray

Door handles – Black

Grille and upper grille bar – Gray

Headlamp bezels – Black

Rear liftgate with fixed glass (includes power 2nd-row windows and fixed 3rd-row glass)

Available Package

Taxi Package includes AM/FM stereo with 4 speakers (2 front/2 rear); manual electric air conditioning; power front windows with one-touch-up/-down; power-adjustable, heated, manual-folding sideview mirrors; recessed 2nd-row seat; 180° swing-out rear cargo doors (includes one-touch-up/-down power 2nd-row windows and fixed 3rd-row/rear-door glass); rear-window defroster; 4 manual keys; and Taxi upfit wiring harness (deletes 3rd-row seating and SecurILock[®] Passive Anti-Theft System)

Available Options

Interior

Cargo net kit – Vertical (divides seat from cargo area)

Forward Sensing System (includes Reverse Sensing System; requires cornering fog lamps)

Overhead console – Aircraft-style, mid-vehicle (n/a with Taxi Package)

Exterior

Cargo doors – Rear, 180° swing-out (includes power 2nd-row windows)

Cornering fog lamps (n/a with Taxi Package)

Roof wiring hole (only available with Taxi Package)

XL VAN & WAGON

Available Packages

CNG/LPG Gaseous Engine Prep Package (2.5L DOHC I-4 engine)

Trailer Tow Package includes Class I trailer hitch receiver, trailer module, 4-pin connector and trailer sway control (n/a with Taxi Package)

Available Options

Mechanical

Engine block heater

Upfitter wiring harness (LWB only; n/a with Taxi Package)

Seating

Charcoal Black cloth seating surfaces

Interior

AM/FM stereo/single-CD player

AM/FM stereo/single-CD player with rear view camera

AM/FM stereo/single-CD player with Ford SYNC[®]

AM/FM stereo/single-CD player with SYNC and rear view camera (requires cruise control)

Cruise control

Key fobs (2 additional; n/a with Taxi Package)

MyKey[®] (requires cruise control; n/a with Taxi Package)

Perimeter alarm (n/a with Taxi Package)

Reverse Sensing System (included with Forward Sensing System on Wagon)

Smoker's Pack – Includes 1 ash cup (n/a with Taxi Package)

Exterior

Crew Chief[™] powered by Telogis^{®2} – Fleet-tracking system (includes 1 year of subscription service)

Daytime running lamps

Mirrors – Black sideview, power-adjustable glass, heated, manual folding with integrated blind spot mirrors (included with Quickclear[™] electric windshield defroster)

Privacy glass from B-pillar back

Quickclear electric windshield defroster – Includes heated washer jets, and power-adjustable, heated sideview mirrors (n/a on Taxi Package)

Rear-window defroster (requires fixed rear glass; included with Taxi Package)

Splash guards (front and rear)

Available Fleet-Only Options

3rd-row seats delete (Wagon)

Speed limitation – 65-mph governed top speed (n/a with MyKey)

Speed limitation – 75-mph governed top speed (n/a with MyKey)

2015 TRANSIT CONNECT

ford.com



¹Available feature. ²Ford Licensed Accessory.

XLT



XLT Wagon, Medium Stone cloth. Available equipment.

Integrated blind spot mirror.

SYNC steering wheel controls.¹

USB port in front center console.¹



16" Steel with Styled Wheel Cover Standard



16" Aluminum with Locking Wheel Lugs Optional



17" Aluminum with Locking Wheel Lugs Optional on Wagon

XLT VAN

Includes select XL Van features, plus:

Configurations

Short Wheelbase – 2-passenger
Long Wheelbase – 2-passenger

Mechanical

16" steel wheels with styled wheel covers and 215/55R16 all-season tires

Seating

6-way manual driver's seat with manual lumbar/recline
Charcoal Black or Medium Stone cloth seating surfaces

Interior

4.2" color LCD multifunctional display
12-volt powerpoint in rear cargo area
AM/FM stereo/single-CD player
Cruise control
Door handles – Satin-chrome
Driver and front-passenger sun visors with vanity mirrors; driver's side includes ticket strap
Dual front map lights

Flooring – Carpet in front with carpeted floor mats; molded-in vinyl liner in rear cargo area

In-cluster message center

MyKey[®]

Premium front center closable console with 2 cupholders

Steering wheel – Satin-chrome accents

Exterior

Bumpers – Body-color front, gray rear

Fog lamps with body-color bezels

Mirrors – Black sideview, power-adjustable glass, heated, manual folding with integrated blind spot mirrors

Privacy glass from B-pillar back (included when ordered with 2nd-row glass or fixed rear glass)

Rear bumper end caps – Body-color

Available Package

CNG/LPG Gaseous Engine Prep Package
(2.5L DOHC I-4 engine)

Available Options

Seating

6-way manual driver's seat with manual lumbar and 4-way manual passenger seat (non-fold-flat back) with manual recline

Interior

AM/FM stereo/single-CD player with Ford SYNC[®]

AM/FM stereo/single-CD player with rear view camera

AM/FM stereo/single-CD player with SYNC, SiriusXM[®] with 6-month service trial, and HD Radio[™] Technology

Flooring – All-weather floor mats (front)

Rear cargo area light – LED

Exterior

Cargo doors – Rear, 180° swing-out with fixed glass

Mirrors – Large sideview (recommended for towing)

Rear liftgate with fixed glass

Rear-window defroster (requires fixed rear glass)

Windows – Fixed 2nd-row driver and passenger side (requires fixed rear glass)

Windows – Fixed 2nd-row passenger side

XLT WAGON

Includes select XLT Van features, plus:

Configurations

Short Wheelbase – 5-passenger
Long Wheelbase – 7-passenger

Seating

2nd-row 60/40 split-fold seat with folding armrest (includes 2 cupholders)

2nd-row 60/40 removable fold-and-tumble seat (SWB only)

Interior

AM/FM stereo/single-CD player with 4 speakers and rear view camera

Flooring – Carpet in front (includes carpeted floor mats), 2nd row, 3rd row (LWB), and rear cargo area

In-floor storage (behind front-passenger seat)

Overhead storage shelf with grab handles, sunglasses holder and child observation mirror

Windows – Power front with one-touch-up/-down

Exterior

Acoustic-laminate windshield

Bodyside moldings – Body-color

Bumpers – Body-color

Door handles – Body-color

Rear liftgate with fixed glass (includes one-touch-up/-down power 2nd-row windows and fixed 3rd-row glass)

Rear-window defroster

Available Options

Mechanical

17" aluminum wheels with locking wheel lugs

Seating

6-way power driver's seat with power recline and 4-way manual front-passenger seat with manual recline (both seats include manual lumbar and seat back map pockets; requires Medium Stone leather-trimmed seating surfaces)

Medium Stone leather-trimmed seating surfaces

Interior

Cargo net kit – Vertical (divides seat from cargo area)

Flooring – All-weather floor mats (1st and 2nd row)

Flooring – Black vinyl cargo area (includes 3rd row on LWB)

Flooring – 2nd-row carpeted floor mats (2-piece kit)

Overhead console – Aircraft-style, mid-vehicle (n/a with panoramic fixed-glass Vista Roof[®])

Overhead console – Aircraft-style, rear (SWB; requires panoramic fixed-glass Vista Roof)

Panoramic fixed-glass Vista Roof with power sunshade (includes roof rails; n/a with 180° swing-out rear cargo doors)

Rear cargo area cover (SWB; requires rear liftgate)

Exterior

Cargo doors – Rear, 180° swing-out (includes one-touch-up/-down power 2nd-row windows and fixed 3rd-row/rear glass)

Mirrors – Black sideview, power-adjustable glass, heated, power-folding with integrated blind spot mirrors

Roof rack with crossbars

Roof rails

XLT VAN & WAGON

Available Package

Trailer Tow Package includes Class I trailer hitch receiver, trailer module, 4-pin connector and trailer sway control

Available Options

Mechanical

1.6L EcoBoost[®] engine with Active Grille Shutters (n/a with LWB Wagon)

Engine block heater

Upfitter wiring harness (LWB only)

16" aluminum wheels with locking wheel lugs

Interior

AM/FM stereo/single-CD player with SYNC and rear view camera

AM/FM stereo/single-CD player with SYNC, SiriusXM with 6-month service trial, HD Radio Technology and rear view camera

MyFord Touch[®] with 6.5" color LCD touch screen, media hub and rear view camera – Includes AM/FM stereo/single-CD player, Navigation System, SYNC, SiriusXM Traffic and Travel Link[®] with 5-year trial subscription, and HD Radio Technology

Dual-zone electronic automatic temperature control
Flooring – Black vinyl 1st and 2nd rows (requires vinyl cargo area; 2nd row on Wagon only)

Forward Sensing System

Key fobs (2 additional)

Perimeter alarm

Remote Start System

Reverse Sensing System (included with Forward Sensing System)

Smoker's Pack – Includes 1 ash cup

Exterior

Automatic headlamps – Wiper-activated with follow-me-home lighting (requires SYNC; Van requires Quickclear[™] electric windshield defroster)

Cornering fog lamps

Crew Chief[™] powered by Telogis^{®2} – Fleet-tracking system (includes 1 year of subscription service)

Daytime running lamps

Quickclear electric windshield defroster – Includes heated washer jets, and power-adjustable, heated sideview mirrors

Splash guards (front and rear)

Available Fleet-Only Option

3rd-row seats delete (LWB Wagon)

¹Available feature. ²Ford Licensed Accessory.



TITANIUM WAGON

Includes XLT LWB Wagon features, plus:

Configurations

Long Wheelbase – 7-passenger

Mechanical

16" aluminum wheels with locking wheel lugs and 215/55R16 tires

Seating

6-way power driver's seat with power recline and 4-way manual front-passenger seat with manual recline (both seats include heat, manual lumbar and seat back map pockets)

Medium Stone leather-trimmed seating surfaces

Interior

AM/FM stereo/single-CD player with Ford SYNC®, rear view camera and 6 speakers (4 in front/2 in rear)

Auto-dimming rearview mirror

Compass display

Dual-zone electronic automatic temperature control

Flooring – 1st and 2nd-row carpeted floor mats

Leather-wrapped steering wheel and shifter knob

Locking and illuminated glove compartment

Exterior

Automatic headlamps with chrome bezels – Wiper-activated with follow-me-home lighting

Cornering fog lamps

Grille – Gray with chrome surround and chrome upper bar

Mirrors – Body-color sideview, power-adjustable glass, heated, power-folding with integrated blind spot mirrors

Wipers – Rain-sensing front windshield

Available Package

Trailer Tow Package includes Class I trailer hitch receiver, trailer module, 4-pin connector and trailer sway control

Available Options

Mechanical

Engine block heater

Upfitter wiring harness

17" aluminum wheels with locking wheel lugs

Interior

AM/FM stereo/single-CD player with SYNC, SiriusXM® with 6-month service trial, HD Radio™ Technology and rear view camera

MyFord Touch® with 6.5" color LCD touch screen, media hub and rear view camera – Includes AM/FM stereo/single-CD player, Navigation System, SYNC, SiriusXM Traffic and Travel Link® with 5-year trial subscription, and HD Radio Technology

Cargo net kit – Vertical (divides seat from cargo area)

Flooring – All-weather floor mats (1st and 2nd row)

Forward Sensing System

Key fobs (2 additional)

Overhead console – Aircraft-style, mid-vehicle (n/a with panoramic fixed-glass Vista Roof®)

Panoramic fixed-glass Vista Roof with power sunshade (includes roof rails; roof rails not included if roof rack is ordered)

Perimeter alarm

Remote Start System

Reverse Sensing System (included with Forward Sensing System)

Smoker's Pack – Includes 1 ash cup

Exterior

Crew Chief™ powered by Telogis®¹ – Fleet-tracking system (includes 1 year of subscription service)

Daytime running lamps

Quickclear™ electric windshield defroster – Includes heated washer jets, and power-adjustable, heated sideview mirrors

Roof rack with crossbars

Roof rails

Splash guards (front and rear)

Available Fleet-Only Option

3rd-row seats delete



Titanium Wagon. Medium Stone leather trim. Available equipment.

Aircraft-style, mid-vehicle overhead console with storage.²

In-floor storage compartment behind front-passenger seat.

Heated front seats.



16" Aluminum with Locking Wheel Lugs Standard



17" Aluminum with Locking Wheel Lugs Optional

¹Ford Licensed Accessory. ²Available feature.

EXTERIORS



Frozen White



Silver



School Bus Yellow (Taxi Package)



Race Red



Deep Impact Blue



Dark Blue



Tectonic Silver



Solar

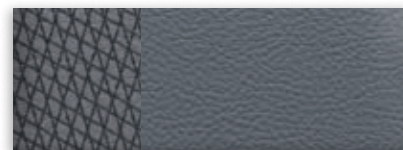


Magnetic

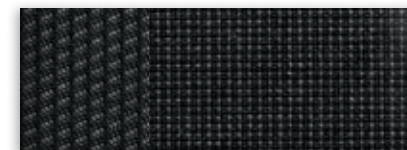


Panther Black

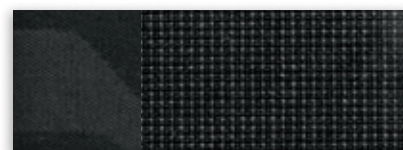
INTERIORS



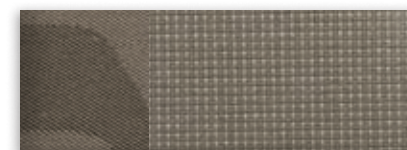
1 Pewter Vinyl



2 Charcoal Black Cloth



3 Charcoal Black Cloth



4 Medium Stone Cloth



5 Medium Stone Leather¹

Bring these colors to life



Exteriors	Interiors									
	XL		XLT			TITANIUM				
Frozen White	1	2	3	4	5	5				
Silver	1	2	3	4	5	5				
School Bus Yellow ²	1	2								
Race Red	1	2	3	4	5	5				
Deep Impact Blue ¹	1	2	3	4	5	5				
Dark Blue	1	2	3	4	5	5				
Tectonic Silver ¹	1	2	3	4	5	5				
Solar ¹	1	2	3	4	5	5				
Magnetic ¹	1	2	3	4	5	5				
Panther Black	1	2	3	4	5	5				

¹Available only on Wagon. ²Available only on Wagon with Taxi Package. Colors are representative only. See your dealer for actual paint/trim options.





XLT Wagon (Long Wheelbase) in Tectonic Silver accessorized with Aeroskin™ hood protector by Lund®¹, keyless entry keypad, side window deflectors, molded splash guards, 16" aluminum wheels, and roof crossbars and cargo box by THULE®¹

XLT Van (Long Wheelbase) in Frozen White accessorized with Ford Commercial Graphics by 3M Original Wraps,¹ trailer towing accessories, side window deflectors, front and rear molded splash guards, and 16" aluminum wheels

Portable DVD rear-seat entertainment system by NextBase®¹

Trailer hitch assembly

Remote start systems

All-weather floor mats

Exterior

- Racks and carriers¹
- Rear bumper protector
- Splash guards
- Trailer towing accessories

Interior

- Ash cup/coin holders
- Cargo organizers and protectors
- Carpeted floor mats
- Interior light kit
- Interior rear window grilles
- Tablet cradle¹

Electronics

- Auto-dimming rearview mirror
- Crew Chief™ powered by Telogis®¹
- Vehicle Security System
- Warning sensor systems¹

Learn more about
your Transit Connect



2015
TRANSIT CONNECT



ford.com

New Vehicle Limited Warranty. We want your Ford Transit Connect ownership experience to be the best it can be. Under this warranty, your new vehicle comes with 3-year/36,000-mile bumper-to-bumper coverage, 5-year/60,000-mile Powertrain Warranty coverage, 5-year/60,000-mile safety restraint coverage, and 5-year/unlimited-mile corrosion (perforation) coverage – all with no deductible. Please ask your Ford Dealer for a copy of this limited warranty.

Roadside Assistance. Covers your vehicle for 5 years or 60,000 miles, so you have the security of knowing that help may be only a phone call away should you run out of fuel, lock yourself out of the vehicle or need towing. Your Ford Dealer can provide complete details on all of these advantages.

Ford Credit. Get the ride you want. Whether you plan to lease or finance, you'll find the choices that are right for you at Ford Credit. Ask your Ford Dealer for details or check us out at fordcredit.com.

Ford Extended Service Plan. For a purchase or lease, the Ford Extended Service Plan (ESP) gives you peace-of-mind protection designed to cover key vehicle components and protect you from the cost of unexpected repairs. Ask your dealer for a Ford ESP, the only service contract backed exclusively by Ford and honored at all Ford Lincoln dealerships.

Insurance Services. Get Ford Motor Company quality in your auto insurance. Our program offers industry-leading benefits and competitive rates. Call 1-877-367-3847, or visit us at fordvip.com for a no-obligation quote. Insurance offered by American Road Services Company (in CA, American Road Insurance Agency), a licensed agency and subsidiary of Ford Motor Company.

Ford Original Accessories will be warranted for whichever provides you the greatest benefit: 24 months/unlimited mileage, or the remainder of your Bumper-to-Bumper 3-year/36,000-mile New Vehicle Limited Warranty. Ford Licensed Accessories (FLA) are warranted by the accessory manufacturer's warranty. FLA are designed and developed by the accessory manufacturer and have not been designed or tested to Ford Motor Company engineering requirements. Contact your Ford Dealer for details and/or a copy of all limited warranties.

Comparisons based on competitive models (class is Small Vans), publicly available information and Ford certification data at time of release. Vehicles may be shown with optional equipment. Features may be offered only in combination with other options or subject to additional ordering requirements/limitations. Dimensions shown may vary due to optional features and/or production variability. Information is provided on an "as is" basis and could include technical, typographical or other errors. Ford makes no warranties, representations, or guarantees of any kind, express or implied, including but not limited to, accuracy, currency, or completeness, the operation of the information, materials, content, availability, and products. Ford reserves the right to change product specifications, pricing and equipment at any time without incurring obligations. Your Ford Dealer is the best source of the most up-to-date information on Ford vehicles.

After trial period expires, SiriusXM Satellite Radio, SiriusXM Traffic and Travel Link subscriptions are sold separately or as a package and are continuous until you call SiriusXM to cancel. See SiriusXM Customer Agreement for complete terms at www.siriusxm.com. SiriusXM Traffic and Travel Link available in select markets. For more information, see www.siriusxm.com/travellink or www.siriusxm.com/traffic. Sirius, XM and all related marks and logos are trademarks of Sirius XM Radio Inc. Cricket is a registered trademark of Taxa Inc. HD Radio is a proprietary trademark of iBiquity Digital Corp. iHeartAuto is a trademark owned by Clear Channel Broadcasting, Inc. All third party uses are authorized under license. iPod is a trademark of Apple Inc., registered in the U.S. and other countries. Masterack and SmartSpace are registered trademarks of Leggett & Platt Commercial Vehicle Products Company. Microsoft is a registered trademark of Microsoft Corporation. PANDORA, the PANDORA logo, and the Pandora trade dress are trademarks or registered trademarks of Pandora Media, Inc. Used with permission. The Bluetooth word mark is a trademark of the Bluetooth SIG, Inc. THULE is a registered trademark of Thule Sweden AB.

Follow Ford:

